

汽油分析系统-6: PONA分析系统

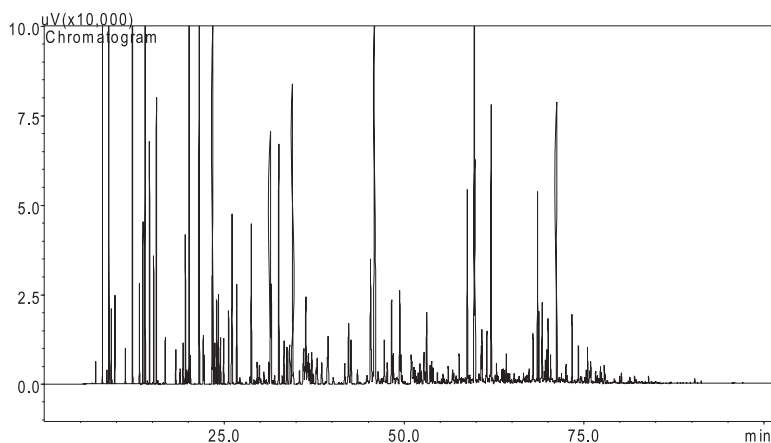
系统配置:

序号	配置	数量
1	GC-2010 Plus AF	1
2	AOC-20i	1
3	PONA色谱柱	1
4	PONA软件	1
5	色谱工作站	1

分析组分及样品浓度范围:

C12以下汽油馏分。

典型谱图:



PONA数据:

Sample name				Sampling date				
Sample ID				Analysis date 2007-11-7 13:38				
Operator Admin				Area ID% 96.10				
ID table 071108 5134XGASOLINE				Identified peaks [238/361]				
Comments air 300 H2 30 makeup 30				Total area 22476613				
Carbon 85.51 wt%				Density(15deg) 0.7328 g/cm3				
Hydrogen 13.46 wt%				Average molecular weight 93.49				
Oxygen 1.03 wt%				Research Octane Number 82.585				
				Vapor pressure(37.78deg) 53.2 kPa				
Area%	N-P	I-P	O	N	A	D	E	TOTAL
C-1								0.00
C-2								0.00
C-3								0.00
C-4	0.316	0.107	1.038					1.46
C-5	1.707	7.508	8.335	0.192		0.106	4.259	22.11
C-6	0.348	7.745	7.581	1.718	1.307		0.093	18.79
C-7	1.013	6.301	2.961	1.424	6.393			18.09
C-8	0.871	6.053	1.552	1.893	8.837	0.009		19.21
C-9	0.402	2.771	0.645	0.540	8.151			12.51
C-10	0.218	1.203	0.259	0.036	3.809			5.52
C-11	0.118	1.169	0.020	0.072	0.665			1.94
C-12	0.040	0.216			0.053			0.31
C-13	0.012	0.027						0.04
C-14	0.010							0.01
C-15								0.00
C-16								0.00
C-17								0.00
C-18								0.00
C-19								0.00
C-20								0.00
TOTAL	5.05	33.10	22.39	5.88	29.11	0.11	4.35	100.00